



# Rib Lake Elementary School

2  
0  
2  
2



# September

**RLES Staff is happy to be back to school!**

### **Attention Parents:**

**School starts at 8:05 a.m. We ask parents kindly to be out of the building by 8:00 a.m. so classes may start promptly.**

The following is a reminder of the bus safety procedures. The buses will drop off at the District Office doors and **parents are to drop their children off at the main entryway by the elementary office starting at 7:45 a.m.** Also parents, when you are dropping your child off in the front of the school, please pull up by the sidewalk or park in the median and walk your child across the parking lot. This will prevent any students from trying to cross the street areas of the parking lot unattended.

**Call-ins for parent pick-up: Please call the office by 2:00p.m.**

For the end-of-day dismissal, parents, **please pick your child up at the District Office doors by 3:15.** For safety reasons, children must be accompanied as they leave the sidewalk area. Please park and meet your child on the grass or sidewalk.

**Thank you for helping us with these procedures to keep our children safe.**

### **Upcoming Events:**

- **Sept 5**.....NO SCHOOL - Labor Day
- **Sept 6**..... Return to School
- **Sept 7**.....Summer Reading slips are due
- **Sept 9**.....Back to School Spectacular
- **Sept 16**..... Meet the Firetrucks @ 8:15 a.m.
- **Sept 21**..... School Pictures (PreK-2nd)
- **Sept 22**..... School Pictures (PreK & 3rd-5th)

### **M E A L S**

Attention Parents: Please send money to the office to credit your child's account as breakfast and lunch are no longer free. Students with a **-\$35.00** lunch account, will receive a peanut butter sandwich until the negative balance is made current. Thank you for your understanding.

**Elementary Breakfast costs:** full price \$ 1.35,  
reduced \$.30

**Elementary Lunch costs:** full price \$ 2.80,  
reduced \$0.40

**Carton of milk:** \$0.40



### **Absences:**

**If your child will be absent from school, please call the elementary office by or before 9:00 a.m.** Without a note or call-in they will be marked unexcused. Thank you

## Title I Corner

### **Free & Reduced Price Lunch Forms**

Rib Lake Elementary School is a schoolwide Title I school. This means that we receive additional money from the federal government to help improve academic achievement for **all** students throughout the entire school. Our funding is based on the high number of students that qualify for free and reduced-price lunches. If your family qualifies, your filling out and returning the form that was mailed out in August not only helps your family save on meal prices, but also helps all students in our school gain access to additional academic support.

### **Title I Compact**

Because we are a schoolwide Title I school, a Title I Compact was sent home in your child's folder in the early days of school. This compact shows how each member works together to help each child succeed. Many families were able to discuss this with their child's teacher during their Meet & Read time. We ask that all families show their support and understanding by reviewing and signing the compact before returning it to your child's teacher.

Thank you for allowing us to partner together in the education of your child(ren). If you have any questions about the Title I program here at RLES. Please reach out!

Aimee Blomberg  
Title I Coordinator  
ablomberg@riblake.k12.wi.us

-----

### **Reading Instruction**

RLES teachers are learners too! Last year many teachers on our RLES staff showed their Commitment to Excellence by completing a program called LETRS. This program was a rigorous refresher of the best teaching methods that researchers have found to help all children become strong readers. When you walk into your child's classroom, you may notice tools like Sound Walls, Sound and Spelling Boxes, Phonemic Awareness practices or Vowel-Syllable Pattern Charts. These tools are all designed to help your child understand the foundational skills of language that are necessary to become fluent readers.

In an effort to seamlessly integrate these skills into your child's learning, grades K-2 are starting a new program this year called Superkids! We are excited to share stories of Cass, Oswald, Golly, and the other Superkids throughout the school year with your child. If you have older children that have gone through our school, you may notice a difference in the timing of the skills that your child is learning. Rest assured that this shift is intentional and purposeful as we continue Building Champion readers.

## Rib Lake Culture of Champions

### The ABC's of the Rib Lake Way

**A** - Attitude is Everything (Keep it Positive!)

**B** - Building Champions (Leadership, Healthy Choices, Respect)

**C** - Commitment to Excellence (Work Hard, Get Better!)



Here at RLES, our champions are working hard to make “Above the Line” choices every day. These choices are intentional and purposeful choices that help students achieve a positive outcome to whatever event they experience throughout the day. We can't control the events life throws at us, but we can control our response. Our champions are working to make “Above the Line” choices in their classrooms, the hallways, at recess, and everywhere! Next time your child needs a little reminder to make good choices at home, encourage them to make an “Above the Line” choice and see how they respond.

THANK  
YOU

**Thank you to the wonderful community member's & businesses for your collection and donation of school supplies.** Your thoughtful donations help families in financial need start the school year with all the supplies their child(ren) need.

#### **Special Thanks to:**

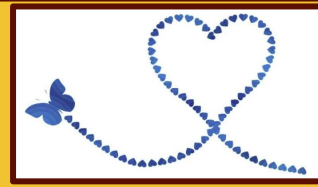
- Deluxe Plastics
- Rib Lake Tops 1013
- Lakewood Credit Union





# Legacy Garden

Dear Friends of the Rib Lake Community,



Our primary goal is to expose students at Rib Lake Elementary to a living resource and respite for students seeking a quiet place to learn and read, as well as a beautiful rejuvenation area for teachers and staff. The legacy part of our garden is to have a place to honor the school community by adding benches and other commemorative items to the legacy garden in times of need.

The Legacy part of our garden is a place to honor the school community and was inspired by our beloved teacher, Mrs. Schafer. We were inspired by her love of wonder and beauty to build an outdoor learning area that will foster the learning of young minds many years to come.

Thank you for considering being a part of this beautiful tribute. You can follow the progress of the garden on facebook.



**DONATION FORM**

Please send donations to  
Rib Lake School District  
Attn: Legacy Garden  
1236 Kennedy Street  
Rib Lake, WI 54470

*I would like to support and donate to the Legacy Garden.*

My Donation is:

\$25  
 \$50  
 \$75  
 \$100  
 Other

Name: \_\_\_\_\_

Address: \_\_\_\_\_

City: \_\_\_\_\_ State: \_\_\_\_\_

Please Don't Acknowledge My Donation Publicly  
 Please Mail My Tax Receipt

Thank you for your generosity and support.  
The Legacy Garden Committee



# Counselor's Corner

Welcome Back! I am excited to be back at school seeing the students' smiling faces! For those of you that are new to our district or for our returning families that may need a refresher, I am Michelle Komarek, the elementary and middle school counselor. I am here to help support not only the students, but also you, the parents. Listed below are some of the services I can provide.

## What does a school counselor DO?

I work alongside teachers and parents to help students develop socially and emotionally, and to help remove any barriers they have to learning!



### I provide:

- Classroom lessons teaching social skills and positive character traits, how to take care of strong feelings, study skills, etc.
- Small group counseling
- Short-term individual counseling
- Consultation with parents and teachers
- Community resource referrals (including longer term therapy services such as CARES)
- Schoolwide programming

## How can I support parents?



- Helping to handle social or emotional concerns you have about your child
- Improving parent-child communication
- Family difficulties or concerns that affect your child at school
- Referrals for community resources
- Helping your child to be on time to school every day
- Discussing concerns about your child's academic achievement



## How does a student see a school counselor?



- Self-referral
- Parent referral
- Administrative, teacher, or other staff referral

If you have any concerns regarding your child's social and emotional well being, please do not hesitate to reach out at 715-427-5818 or

[mkomarek@riblake.k12.wi.us](mailto:mkomarek@riblake.k12.wi.us)

## Nurses Corner

Welcome back to School!

I hope everyone had a great summer and are ready to get back into the swing of school. I'm excited to see the students this year and hope to get to know everyone better!

I wanted to send out information prior to school starting and hopefully this will answer any questions you may have.

Reminder to make sure your student is up to date on any immunizations they are due for. The following information is how many of each vaccinations are required at the age/grade level.

-Pre-K (ages 2 through 4 yrs) 4:DTaP/DTP/DT 3:Polio 3:Hepatitis B 1:MMR 1:Varicella

-Kindergarten through Grade 5. 4:DTaP/DTP/DT/Td 4:Polio 3:Hepatitis B 2:MMR 2:Varicella

-Grades 6 through 12. 4:DTaP/DTP/DT/Td 1:Tdap 4:Polio 3:Hepatitis B 2:MMR 2:Varicella

Immunization Record Form can be found on the school website under health and wellness [In Process \(riblake.k12.wi.us\)](#) this is also where you may sign a waiver for religious or personal reasons. Form must be signed by a physician for medical reasons.

Regarding Covid:

At the board meeting on August 11th, it was decided that we will change our Covid policy. As per CDC & DPI we will not be contact tracing in school or quarantining any students, it is the positive person's responsibility to notify close contacts. Emphasis is on sending ill students home from school, keeping ill students home, and following CDC isolation timelines for those that are positive for covid. We will continue to use the 5 and 5 rule for positive cases of Covid. Day zero is the day symptoms start or the date of a positive test with no symptoms. The positive person will stay home for days 1-5 and may return to school by masking for days 6-10. Mask refusal means the person stays home. Returning to school means symptoms have improved and no fever for 24 hours without medication and they have completed the 5 days of quarantine at home.

Focus will be on things we can control, including staying home when sick, providing good ventilation and air flow, washing hands, using good cough etiquette and promotion of vaccinations. Covid vaccinations are available for those 6 months old and up. Your medical provider or the health department are great resources for vaccinations.

Please refer to DHS/CDC websites to reference the level of community spread as a risk factor for being exposed to covid. [COVID-19 by County | CDC](#)

I plan to send periodic updates and will also let the district know if there are increases in numbers or outbreaks.

At this time, there is no free community Covid testing in place. Free home tests are available at the school if needed. Parents will receive a phone call if their student is sick and needs to go home. A home Covid test may be distributed at that time with parental okay to use at home. Parents must okay any student wanting to take a Covid test to use at home.



Nurses corner continued -

**Home tests will not be administered at school.** We do need to know who is taking the test and what the results are for tracking purposes. Parents, if your student is taking a Covid test-please call their school and let them know the results. We will not accept student verbalizing results and need the parent to call in results for those under the age of 18. The secretaries are able to help with questions if the nurse is not available.

DPI offers this list of COVID-19 symptoms to be used in the school setting to limit over identification.

- Fever (100.0° Fahrenheit or higher), chills, or shaking chills
- Difficulty breathing or shortness of breath
- New loss of taste or smell
- Muscle aches or body aches
- Cough (not due to other known cause, such as chronic cough)
- Sore throat, when in combination with other symptoms
- Nausea, vomiting, when in combination with other symptoms
- Headache, when in combination with other symptoms
- Fatigue, when in combination with other symptoms
- Nasal congestion or runny nose (not due to other known causes, such as allergies), when in combination with other symptoms

Crisis line information:

Gov. Tony Evers and the Wisconsin Department of Health Services (DHS) announced the state is ready for the recent transition to the 988 Suicide & Crisis Lifeline. The new calling code of 988 will allow people of all ages who are experiencing a crisis—whether that is thoughts of suicide, a mental health concern or substance use issue, or any other kind of emotional distress—to get help for themselves or a loved one by connecting them with a trained crisis counselor. The 988 Suicide & Crisis Lifeline is a free and confidential service that is available 24/7, and anyone can access the Lifeline by calling 988 (multiple languages available), texting a message to 988 (English only), or using the chat feature at [988lifeline.org](https://988lifeline.org) (English only)

If you have any questions or concerns for the health of your student as we start the school year please feel free to reach out via phone/email. My office hours will be M-F 0800-1230. I look forward to a great school year!

Maris Pernsteiner  
School District of Rib Lake  
District Nurse

[mpernsteiner@riblake.k12.wi.us](mailto:mpernsteiner@riblake.k12.wi.us)

715-427-3222 ext. 3250